

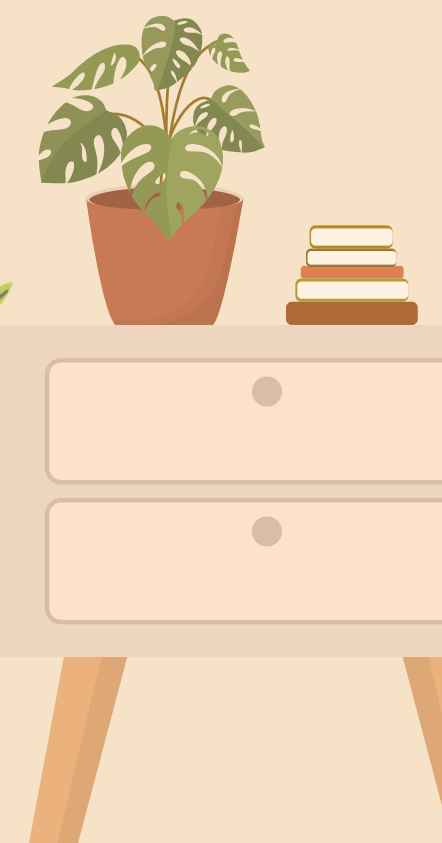
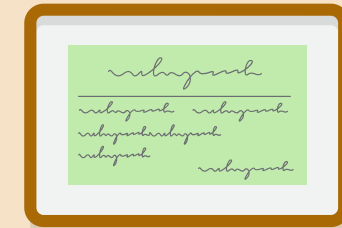
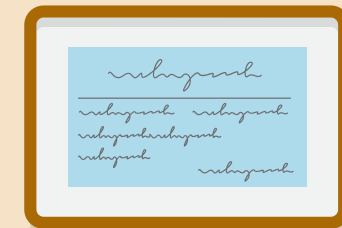
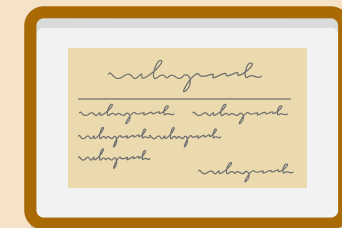
Family Orientation



School Year 2025-2026
Where Love Stimulates Learning!

8707 Stanton Rd
Little Rock, AR 72209

501-562-2774
lss.edugator@gmail.com





General Hours & Attendance

Program	Hours	Absence Call Deadline
Childcare	6:30 AM – 6:00 PM	After 9:49 AM
Private School (K–2)	8:00 AM – 3:00 PM	After 7:49 AM
SPARK Summer Camp	9:00 AM – 6:00 PM	After 8:49 AM
After-School Program	Starts pickup ~1:30 PM	Notify by 12:00 PM

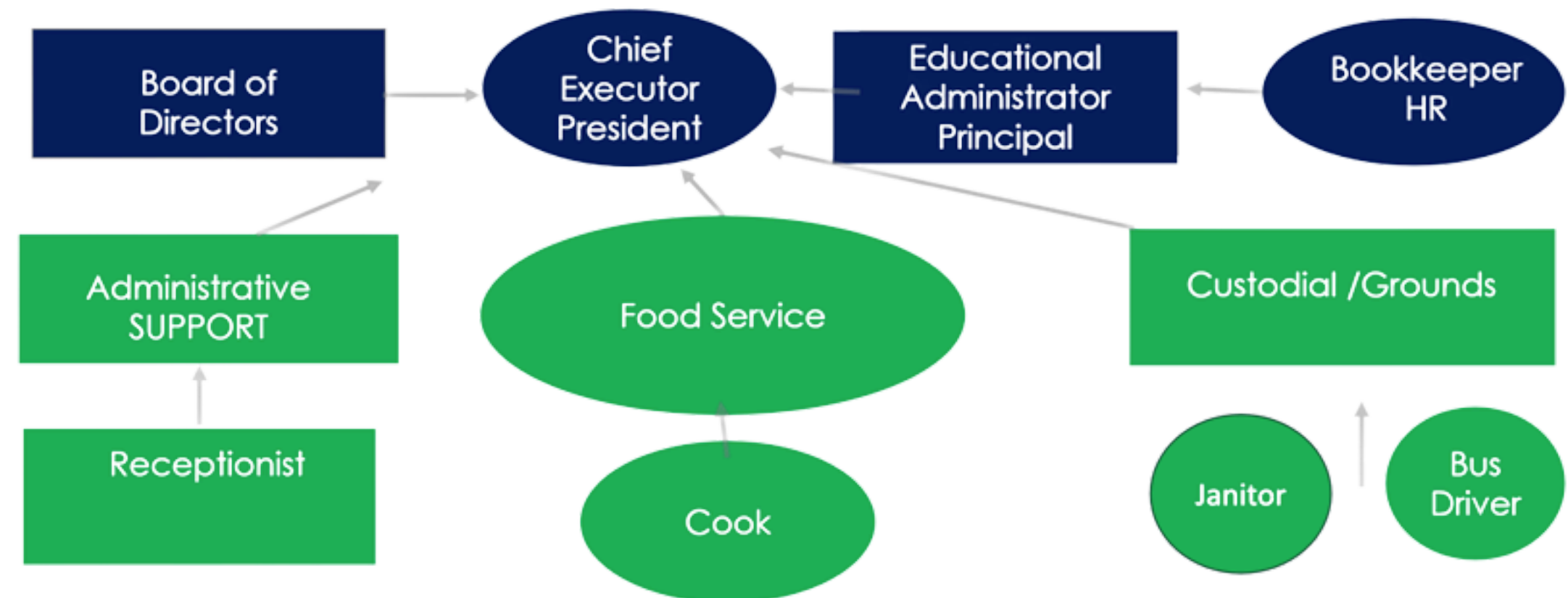
✓ Call or email if your child will be absent.
☎ 501-562-2774 | ✉ lss.edgator@gmail.com

Guiding the Way: Our Leadership Structure



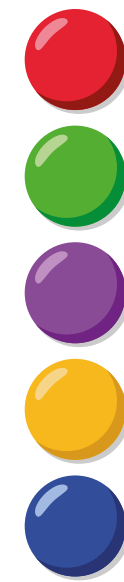
Little Scholars Schools

Sipe Ministries , Inc DBA



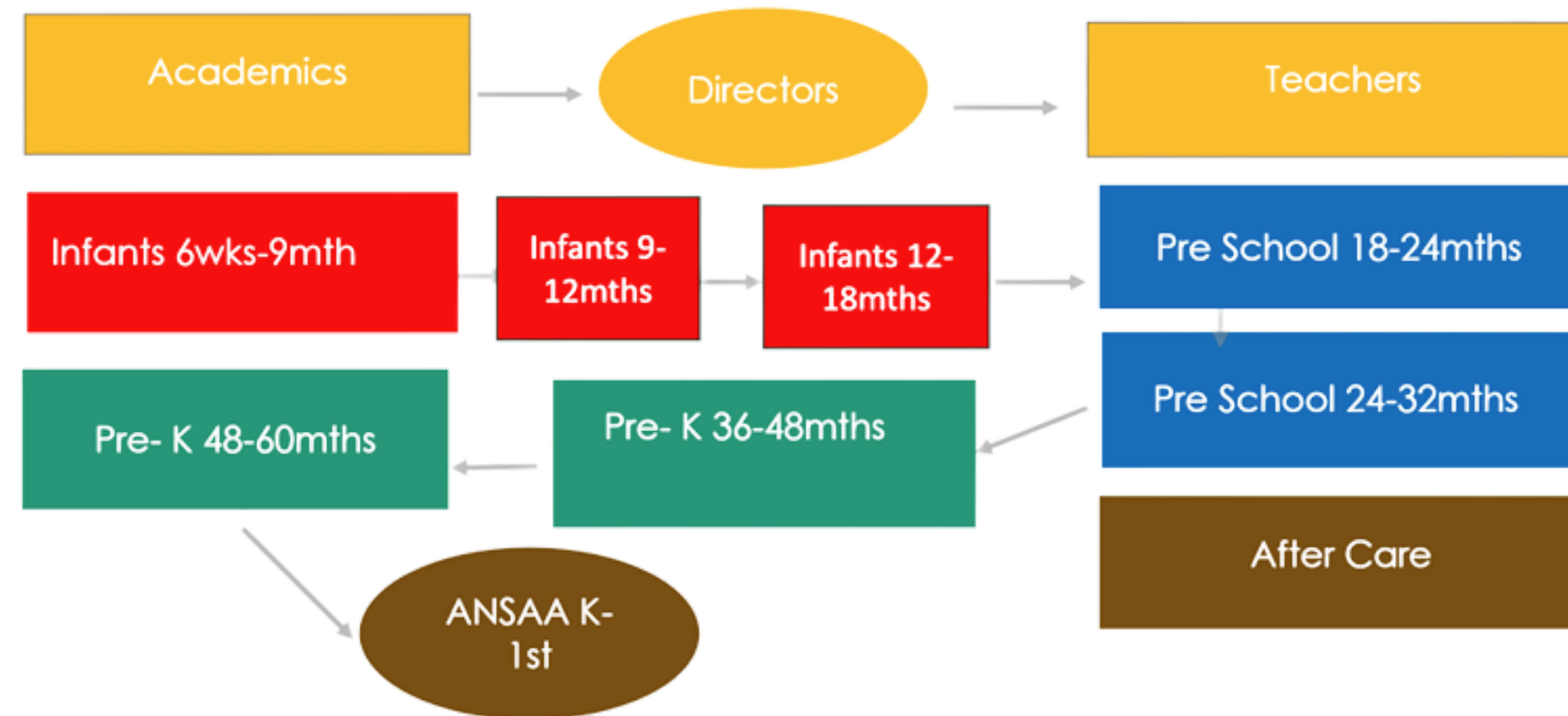
ORGANIZATIONAL CHART 2025-2026

The Little Scholars Team Tree



Little Scholars Schools

Sipe Ministries, Inc DBA



ORGANIZATIONAL CHART 2025-2026

Enter here for
your Enrollment
Checklist!



School Administration

- Enrollment agreement signed
- Personal Data Sheet
- Birth certificate
- Social security card
- Immunization record
- Meal form (SNP-10)
- Transportation form (if applicable)
- Registration fee + 1st week's tuition

Must be submitted at least 24 hours
before your child starts.

Clothing & Personal Belongings

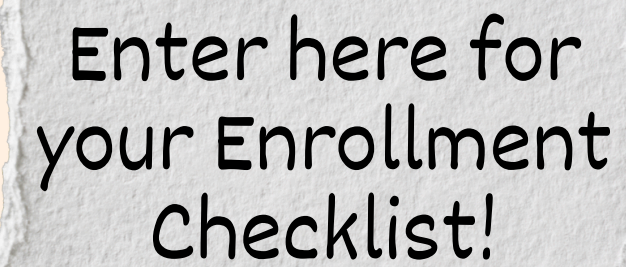
✓ Do bring:

- 2 full changes of clothes
- Labeled jackets, hats, and mittens
- 6+ diapers/pull-ups (if not potty trained)

⊘ Please avoid:

- Long dresses, boots, open-toed sandals
- Toys, jewelry, or personal items (unless it's Show & Tell Day)
- 🗑️ Label everything clearly!

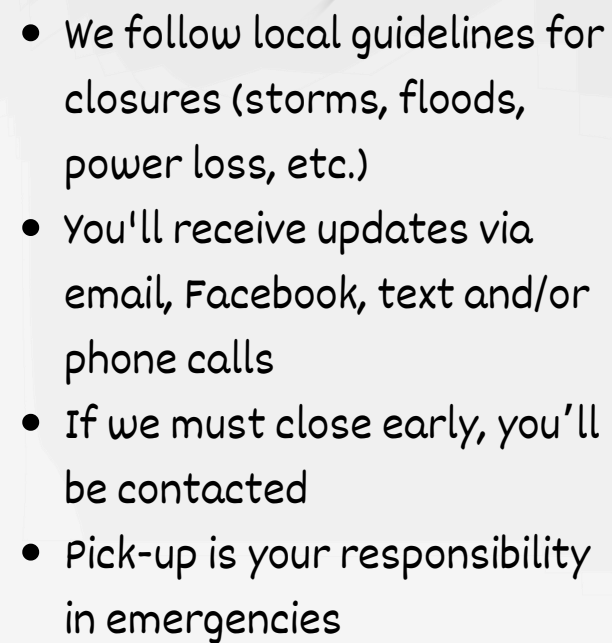




Enter here for
your Enrollment
Checklist!



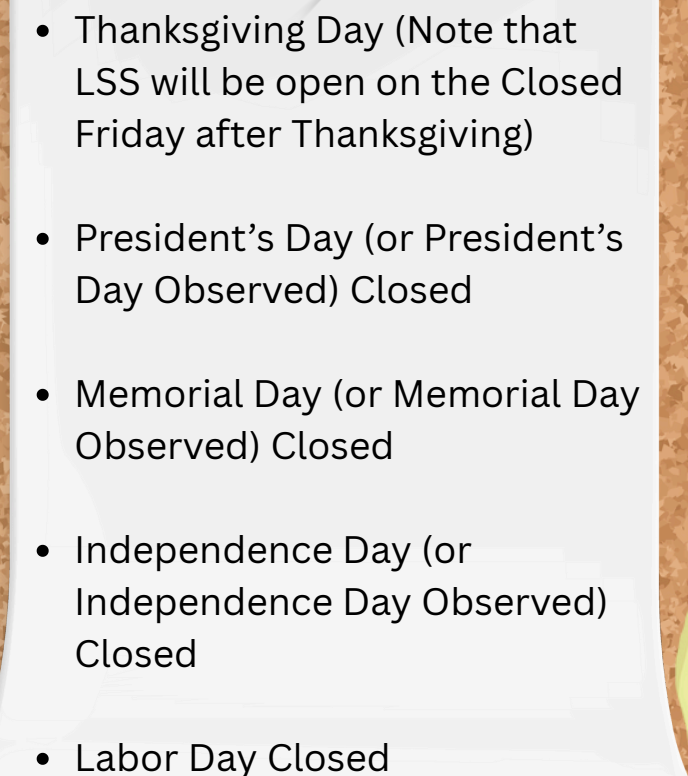
Closures & Emergency Weather Policy

- 
- We follow local guidelines for closures (storms, floods, power loss, etc.)
 - You'll receive updates via email, Facebook, text and/or phone calls
 - If we must close early, you'll be contacted
 - Pick-up is your responsibility in emergencies

Holidays!

LSLC remains open all year and maintain regular hours, except as follows:

- New Year's Day or, if New Year's Day falls on Closed a weekend, the adjacent weekday. New Year's Eve, when it falls on a weekday Close at 2:00 pm.
- Christmas Eve, when it falls on a weekday Close at 2:00 pm. Christmas Day or, if Christmas falls on a weekend Closed the adjacent weekday.

- 
- Thanksgiving Day (Note that LSS will be open on the Closed Friday after Thanksgiving)
 - President's Day (or President's Day Observed) Closed
 - Memorial Day (or Memorial Day Observed) Closed
 - Independence Day (or Independence Day Observed) Closed
 - Labor Day Closed





Drop-off & Pick-up



Drop – off

- ✓ Arrive before cut off time 9:50am
- ✓ Children must be signed in by an adult
- ✓ Children must be clocked in by an adult on Procare

Pick – up

- ✓ Children must be signed out by an adult
- ✓ Only authorized adults may pick up
- ✓ Bring written notice for any pick-up changes
- ✓ Court custody orders must be on file
- ✓ Authorized adults must present ID if staff is unfamiliar with the person.

Do's & Don'ts

Do

- ✓ Follow sign-in/sign-out procedures
- ✓ Keep us updated on authorized pick-up persons

Don't

- ✗ Use your cell phone during drop-off or pick-up
- ✗ Don't send someone unauthorized to pick up your child without notifying us first.

Non-Discrimination Statement

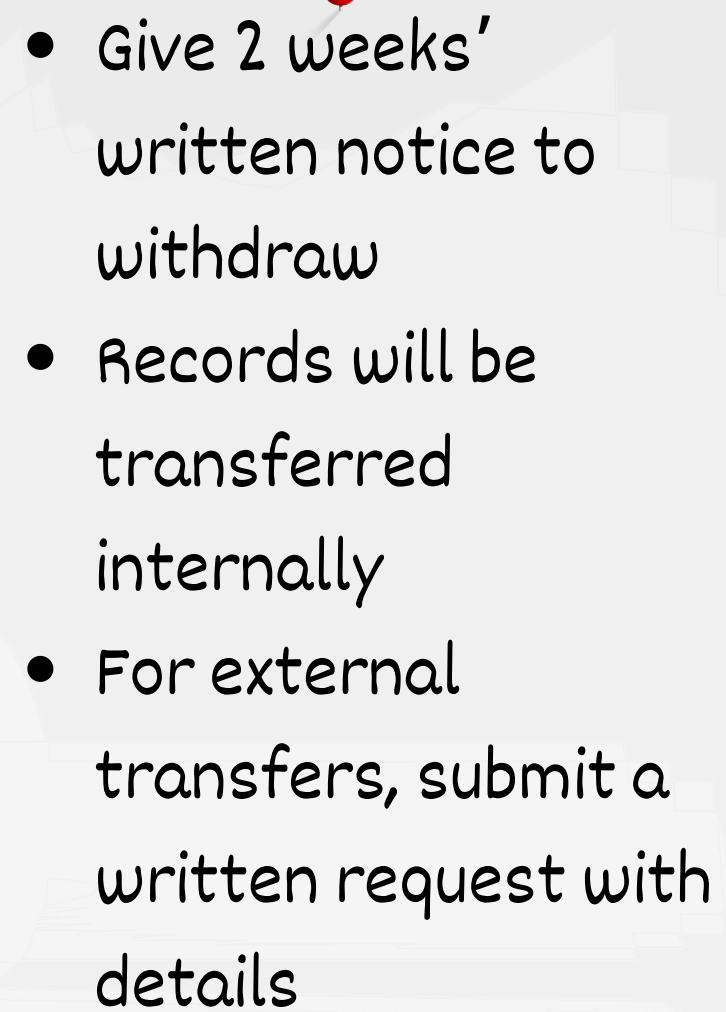
We provide equal educational opportunities to all children regardless of race, color, religion, national origin, gender, age, disability, marital status, sexual orientation, or any other factor protected by law.



A white, torn-edge paper sign with the words "Records Room" in a black, sans-serif font. The sign is pinned to a light blue rectangular background with a thin orange border.

Records Room



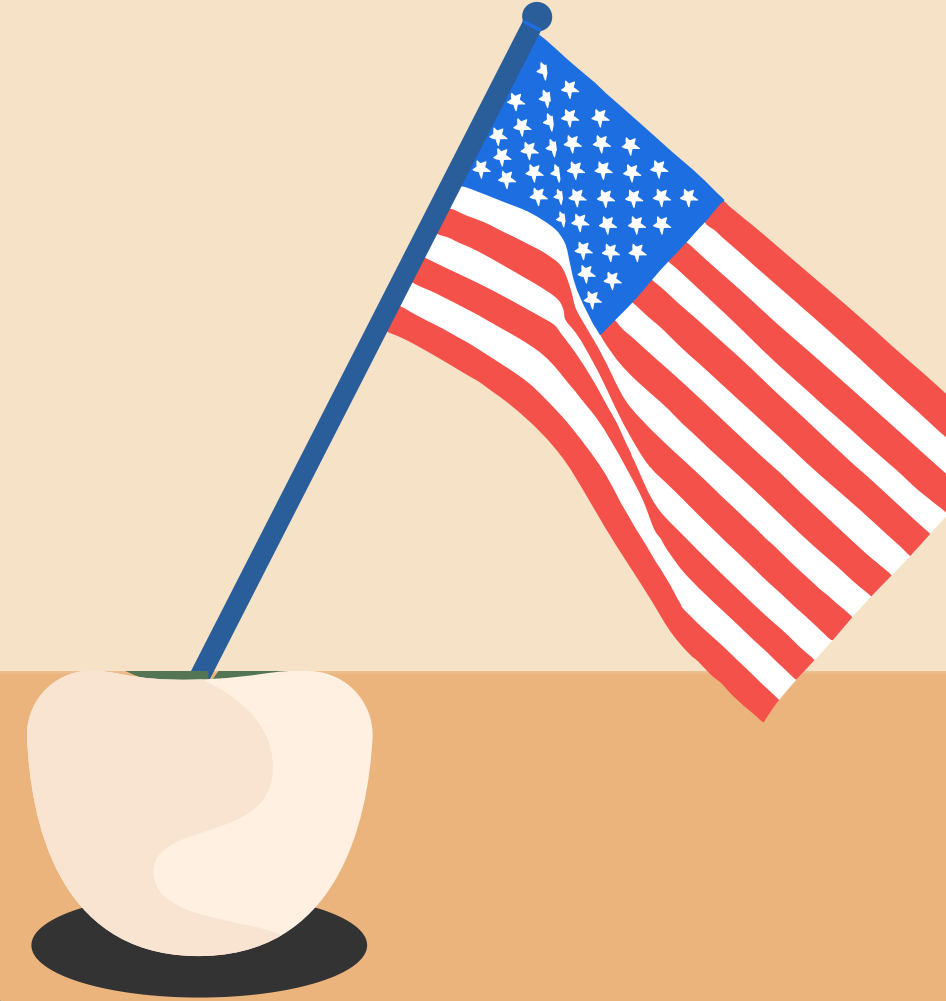
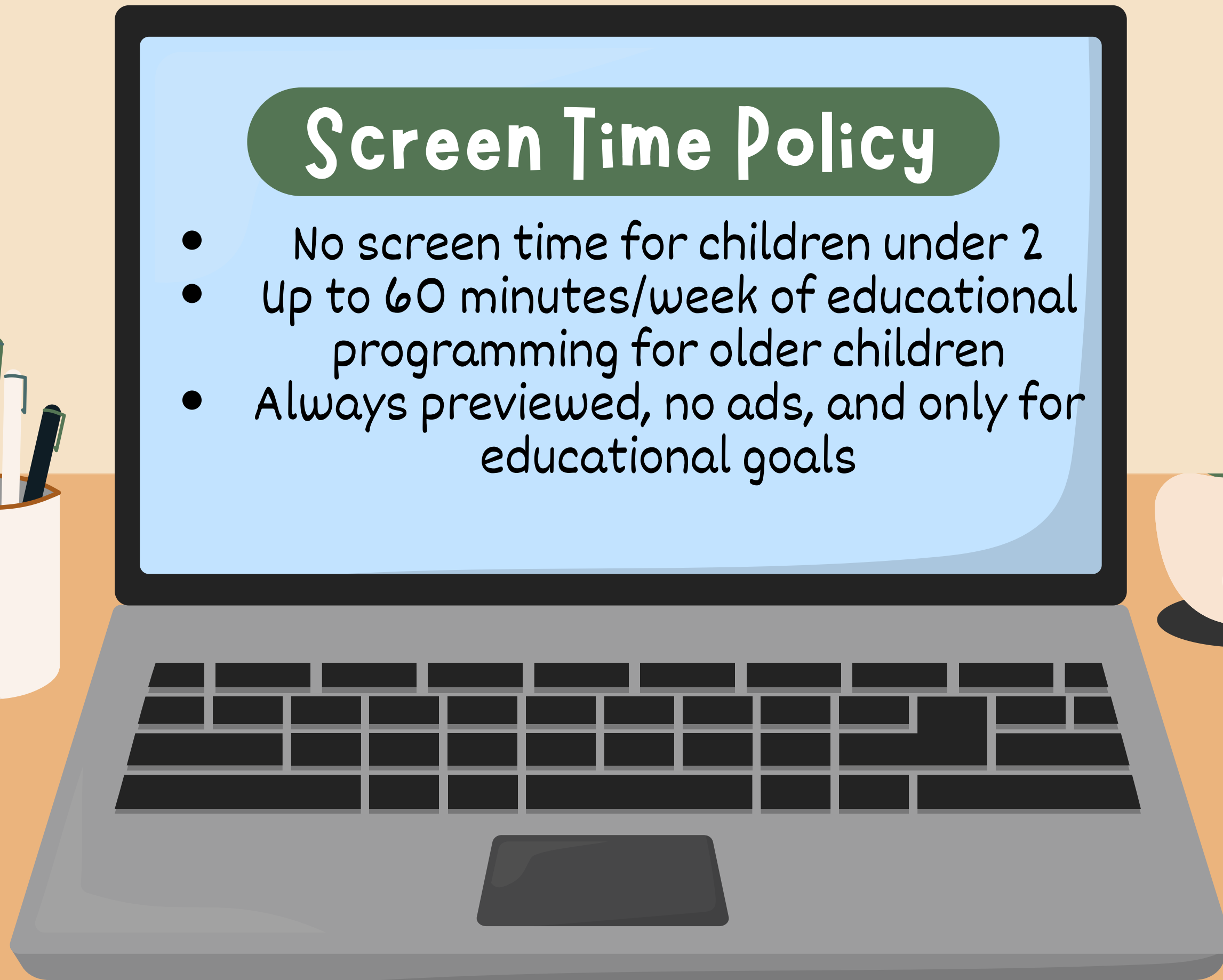
- 
- A white rectangular notice pinned to a corkboard with a red pushpin at the top center. The notice contains a bulleted list of instructions.
- Give 2 weeks' written notice to withdraw
 - Records will be transferred internally
 - For external transfers, submit a written request with details

Withdrawal & Records

A green snake plant with yellow variegation, growing in a brown pot, located in the bottom right corner of the slide.

Screen Time Policy

- No screen time for children under 2
- Up to 60 minutes/week of educational programming for older children
- Always previewed, no ads, and only for educational goals



Class room Rules

Do's

Respect others

Be polite

Come to school
on time

Listen to the
teachers

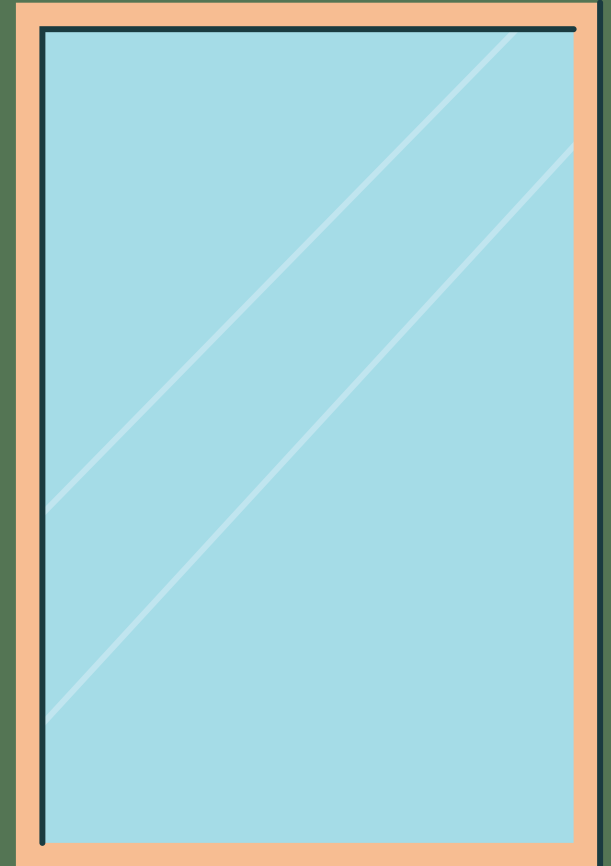
Don'ts

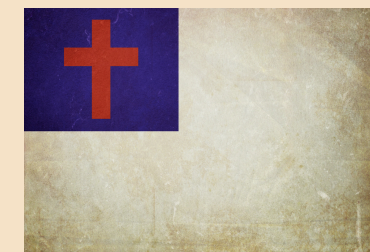
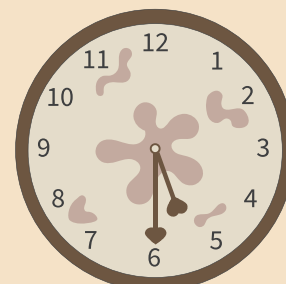
Don't bully others.

Don't disrupt
school guidelines

Don't interrupt
others

Do not litter





We're So Glad You're Here!

Thank you for taking the time to get to know Little Scholars Schools.
Our goal is simple: to partner with you in creating the safest, happiest, and most inspiring
learning environment for your child.

Remember, We're Here for You

If you ever have questions, concerns, or ideas, we want to hear them!
Communication is a two-way street, and your voice matters.

8707 Stanton Rd
Little Rock, AR 72209

501-562-2774
lss.edugator@gmail.com

